

Art. 8010/420
FASHION-PRISM 420
SP



Technical data

Industrial and commercial suspended fixture, for discharge lamp
Body: die cast aluminium body, painted with polyester coated anticorrosion powders silver color RAL 9006
Reflector: in prismatic polycarbonate
Standard gear: 230V-50Hz ballast, power factor capacitor, overlay or impulse ignitor, silicon cables glass slives.
Rules: fitting manufactured according to the IEC 598-CEI 34-21 rules
Options
 • 240V-50Hz ballast

MOD/ST

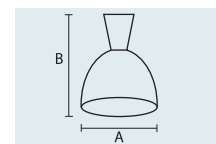
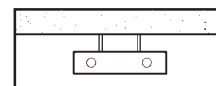


Standard w/o protection

MOD/3



c/w protection in polycarbonate



Art	JM-E (E27)		A	B	C	KG	M ³		
	W	Lampholder Lamp							
8010/420	JM-E 1x70	E27 JM-E	420	510		9	0,10	1	24
8010/420	JM-E 1x150	E27 JM-E	420	510		9	0,10	1	24